



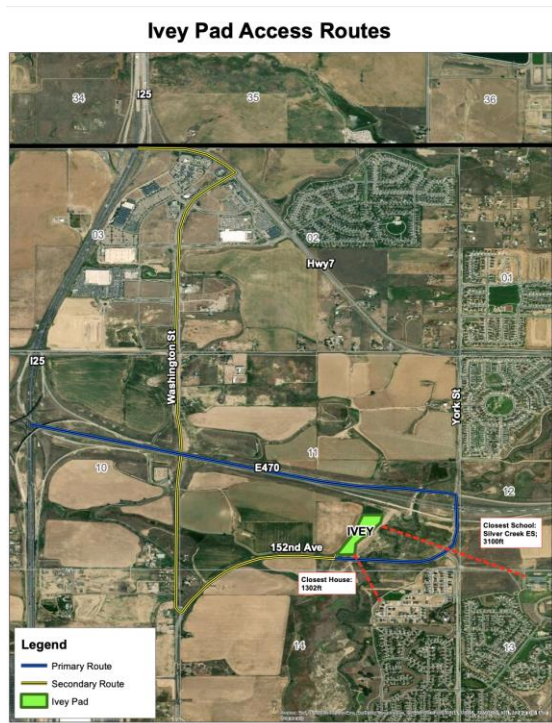
Great Western's Ivey Pad Frequently Asked Questions

What is the Ivey Pad?

The Ivey Pad is a drilling pad owned by Great Western Petroleum, LLC, in Adams County. Deemed Great Western's site of excellence, the Ivey Pad is the first Platinum GREEN facility identified through Great Western's [GREEN Initiative](#). The site will house wellheads for two northern and 10 southern horizontally drilled wells. Great Western was able to reduce the well count at the Ivey Pad thus decreasing the duration of the overall project.

Where is the Ivey Pad located?

The Ivey Pad is sited in Adams County, Colorado. The exact location of the pad is pictured in the map below.



How long will the Ivey Pad be in operation?

The Ivey Pad will encompass four main stages including drilling, completions, and production. The four stages will take approximately four months to complete, however, the drilling stage will only take a few weeks. Please see gwp.com/Ivey for the complete timeline and ongoing updates about the project.

What are the benefits of the Ivey Pad?

As with natural gas and oil development, the Ivey Pad will bring jobs and energy resources to Adams County and the state of Colorado. Another benefit of the Ivey Pad is that it is estimated to produce energy to power approximately 75,476 homes for approximately 20 years.

Great Western has also partnered with the [Butterfly Pavilion](#), a nonprofit invertebrate zoo and conservation leader, to implement environmental restoration at the Ivey Pad. The surrounding land at the project site was once a native prairie nearly 100 years ago. The goal of our partnership with the Butterfly Pavilion is to create greater biodiversity and transform the project site into a thriving, short-grass prairie once again. This process will include attracting more pollinators, more plant species and more bird diversity to the surrounding land, as well as reestablish habitat connectivity and wildlife movement. Surveys on the different species of plants and animals are conducted from the beginning of the project and throughout its duration to monitor the restoration process and see measurable increases in vegetation and various animal species. The restoration project is estimated to last a minimum of three years. As part of Great Western's dedication to environmental sustainability, the Butterfly Pavilion Habitat Restoration project further drives our goal of producing the cleanest natural resources in our state and country.

Great Western submitted a sundry to the Ivey Pad Form 2A with best management practices for this location, which include continuous air monitoring, enhanced noise and odor mitigation, enhanced dust mitigation, emergency shutdown capabilities, and leak mitigation and prevention. The best management practices and conditions of approval have addressed community concerns and Great Western has worked diligently with the COGCC on questions related to the public comments and inquiries about this project.

How is Great Western ensuring safety at the Ivey location?

Great Western has coordinated operations with the North Metro Fire Rescue District, which has jurisdiction over the Ivey Pad. Two meetings have been held within the past year between both parties to discuss the emergency response plan and other details of the location. A tabletop discussion was held with North Metro on this location as well. Additionally, Great Western has offered to host future tabletop discussions or site visits with the Fire District at their request.

Throughout drilling and completion operations, Great Western will have 24-hour security guards at the entrance of the site to ensure that only authorized personnel and vehicles can gain access. A permanent 6-foot wood screen fence will be installed around the location once the wells are producing. A locked gate will be installed once 24-hour operations have concluded.

In addition, as part of Great Western's environmental, health and safety (EHS) practices, each of our oil and gas locations averaged 425 EHS inspections in 2019. The Ivey location will receive the same EHS best practices.

What is Great Western doing to address public concerns and adhere to COGCC requirements?

Great Western has gone above and beyond to ensure good faith collaboration with local communities, regulators and elected officials as an operator of choice in Adams County and in the state of Colorado. Great Western has implemented and is following a set of best management practices (BMPs) to mitigate any potential impacts to the public and the environment. The BMPs are laid out in the next questions as they pertain to specific concerns and impacts. For more information, please visit gwp.com/ivey.

What is the closest building unit to the Ivey Pad?

The closest building unit to the Ivey Pad is 1,302 feet from the edge of the disturbance area. This meets Adams County's current setbacks. The closest piece of production equipment to the nearest building unit will be 1,572 feet.

How far away is the Ivey Pad to nearby schools?

Great Western has complied with the distance requirements set forth by Adams County. The closest building unit is 1,302 feet from the edge of the disturbance area, which exceeds Adams County's current setbacks requirements. The Little Lights Christian Early Learning Center is 2,813 feet from the disturbance area, and the Silver Creek Elementary is 3,308 feet from the disturbance area, both meeting the Adams County requirements. In addition to local regulations, Great Western is also in compliance with the current COGCC rules regarding school setbacks.

How will truck traffic and road maintenance to and from the Ivey Pad impact the surrounding area, including schools?

An extensive, site-specific traffic impact study was conducted by a third-party to evaluate existing traffic and road conditions in the area to identify the best available routes for operational trucks to use. To ensure the safety of the community and comply with permit requirements, Great Western installed a turn lane at no cost to the county or state to mitigate traffic impacts. Great Western has also limited its truck traffic hours to accommodate school bus hours in the mornings and afternoons.

Additionally, the Ivey location will fall under Great Western Petroleum, LLC's stewardship value as it continues to responsibly serve the community and protect the environment by utilizing pipelines to transport products and materials. The resulting reduction in truck traffic and miles creates a safer and more sustainable environment by decreasing emissions and creating a cleaner community.

What are the possible impacts to air quality from the Ivey Pad?

Great Western submitted a sundry to the Ivey Pad Form 2A with best management practices for this location, which include continuous air monitoring during all phases of drilling and completions. Additionally, Great Western is providing air emissions monitoring to detect emissions at the production facility. Monitoring efforts will include a two-week baseline test, an initial data summary report, and subsequent monthly reports to the COGCC. The air emissions monitoring will be performed by a third party.

Based on other studies conducted in conjunction with third parties and the Colorado Department of Health and Environment, the Ivey pad has been engineered to ensure minimal emissions, and emissions of any volatile organic compounds, or VOCs, will be well within healthy air quality standards as defined by the EPA.

What are the possible impacts to the nearby floodplain, groundwater and surface water resources?

Great Western purposefully redesigned its Ivey Pad disturbance area to avoid the floodplain that exists outside of the northeast corner of the pad. Additionally, due to the Ivey Pad's proximity to the floodplain and Big Dry Creek, this pad was built with a dirt berm and tertiary containment pond to provide further protection. Great Western is abiding by further stipulations to ensure the floodplain's protection, including implementing spill prevention plans and facility designs to avoid leaks or releases as well as to help detect them in a time-efficient manner to minimize potential impacts.

What are the possible impacts to wildlife?

Operations at the Ivey Pad will be conducted in accordance with Colorado Parks and Wildlife (CPW). Following CPW's guidance, the site development is located more than 100 meters from the bank edges of a nearby creek. Further evaluation revealed no threatened or endangered species, as well as any of the high priority habitats listed by the CPW, will be impacted by operations at the Ivey site.

As part of Great Western's mission to preserve the land, at the Ivey location, Great Western has partnered with the [Butterfly Pavilion](#) to determine the pollinators in order to plant flowers that benefit the species and pollinators as part of the reclamation process. This project, to our knowledge, is believed to be the first of its kind in Colorado.

What are the possible impacts to open space?

Great Western is mitigating and preventing impacts to a nearby open space, including implementing speed restrictions, managing dust outputs, reducing noise levels, installing walls to reduce noise and light outputs, limiting light positions, and installing fencing upon project completion.

What are the possible noise and light impacts to the surrounding area?

An ambient noise level survey, a noise modeling report and a photometric study were conducted by a third-party consultant and submitted for review with the Adams County Use by Special Review (USR) permit. Great Western has committed to keep a 24-hour community relations line available for any

noise or lighting complaints, and is installing sound and visual walls to reduce potential impacts to the community.

How is Great Western mitigating concerns regarding leak detection and inspections on the Ivey Pad?

Great Western is following best management practices, or BMPs, to ensure proper leak detection and inspection measures such as remote shutdown capabilities via the Supervisory Control and Data Acquisition (SCADA) system, Spill Prevention Control and Countermeasures (SPCC) plans, newly installed or replaced crude oil storage tanks in accordance with the National Fire Protection Association (NFPA), minimum containment capacity of 150% and steel containment with sealed liners, and general housekeeping of material and fluid storage.

Will the Ivey Pad location use pipelines for oil takeaway?

The Ivey location will fall under Great Western Petroleum, LLC's stewardship value as it continues to responsibly serve the community and protect the environment by utilizing pipelines to transport products and materials. The resulting reduction in truck traffic and miles creates a safer and more sustainable environment by decreasing emissions and creating a cleaner community.

What is Great Western doing for the community of Adams County?

Great Western continues to embrace its stewardship value and has made financial contributions to Energy Outreach Colorado, Adams County Foundation, Freedom Service Dogs, CASA of Adams and Broomfield Counties and others. In spite of massive COVID-19 and market related challenges for oil and natural gas, we remain committed to our stewardship programs.

Great Western continues to be a dedicated community partner in Adams County. In 2019, Great Western worked with 53 nonprofit and community organizations in Adams and Weld County.

For more information on the Ivey Pad and to obtain additional details as submitted to the COGCC, visit gwp.com/ivey.